

## TEMBREAK 2 MCCBs AND SWITCH DISCONNECTORS

### Insulation Accessories

#### Terminal Covers for Front Connections (CF)

Terminal covers for front connection are suitable for covering the exposed live parts of conductors terminated on the MCCB.



*Terminal Covers for Front Connection*

*Flush Terminal Covers*

#### Flush Terminal Covers (CS)

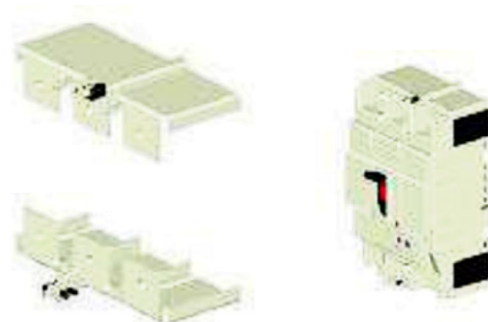
Flush terminal covers are available for 125A to 630A frame models and are useful for increasing the ingress protection rating at the terminals without increasing the overall length. They can be used with busbar and for direct entry of stranded cable (with cable clamp terminals (FW), refer to Section 5, Installation).

Flush terminal covers are identical to rear terminal covers for 400A and 630A frame models.

The user can remove a section of the rear terminal cover using a tool to allow entry of the conductor.

#### Terminal Covers for Rear Connection (CR)

Terminal covers for rear connection are available for 125A to 1000A frame models and may be used on MCCBs fitted with rear connections (RC) or plug-in connections (PM). They prevent access to the terminals from the front and top.

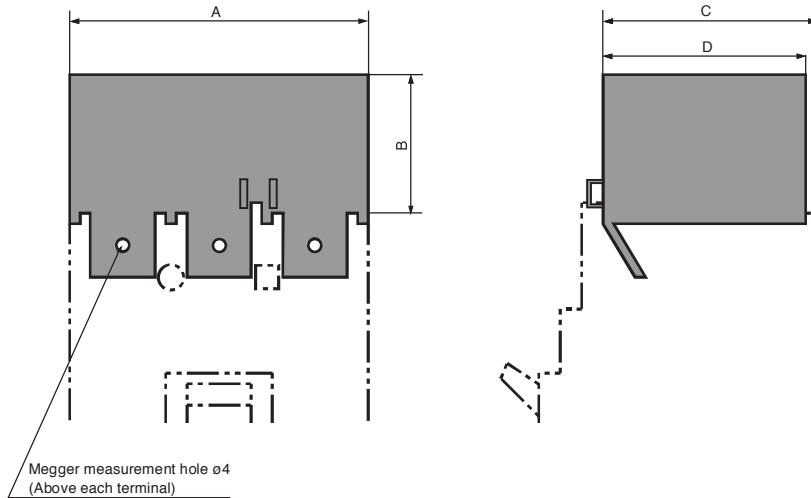


*Terminal Covers for Rear Connection*

## TERMINAL COVERS

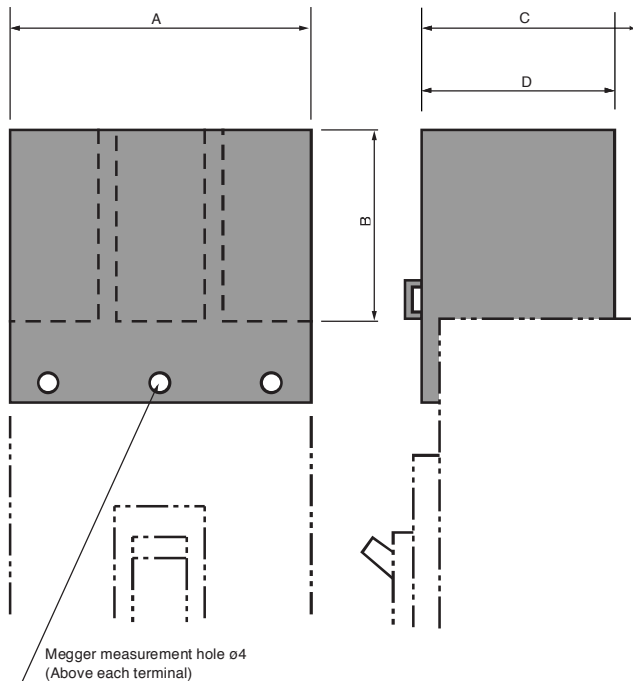
### Tembreak 2 MCCBs & Switch Disconnectors

#### Terminal Covers for Front Connected MCCBs (CF)



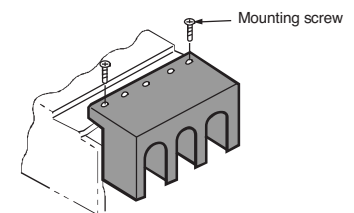
#### Plug-in mounted version

This version can be mounted simply by being plugged in the breaker body.



#### Screw-mounted version

The terminal covers for 630 to 1000AF are mounted to the breakers using tapping screws. The terminal cover for 1250AF is mounted using insert nuts on the breaker cover using screws. The insert nuts do not come standard with the breaker. Please be sure to state "with terminal cover (CF)" when ordering the breaker.

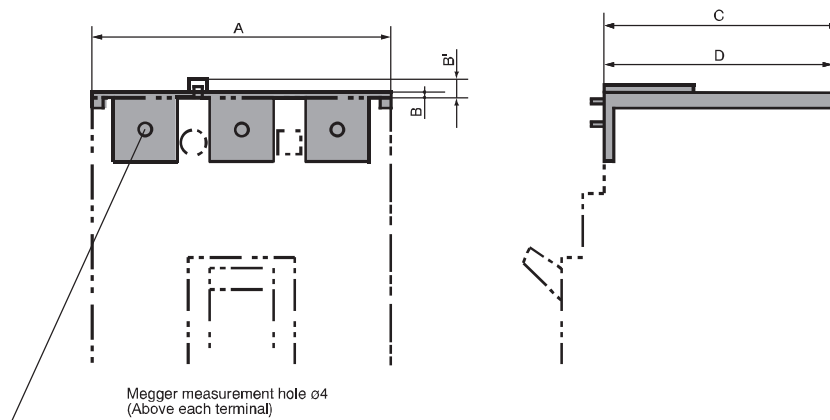


# DIMENSIONS

## TERMINAL COVERS

### Tembreak 2 MCCBs & Switch Disconnectors

#### Terminal Covers for Cable Clamp Terminals Type MCCBs (CS)



MCCB type	Connection	A			B			B'	C			D			Mounting version	
		1P	3P	4P	1P	3P	4P	3P, 4P	1P	3P	4P	1P	3P	4P	Plug-in mounted	Screw-mounted
S125, VS125	Front conn.	30	90	120	40	40	40	o	48	48	48	46	46	46	$\varnothing$	—
	Cable clamp	30	90	120	2.5	2.5	2.5	6	62.5	61	61	60	59.5	59.5	$\varnothing$	—
S160,-NJ, S160NN S250-NJ, S250-GJ, S250-NN, VS250, PVS160	Front conn. (1)	35	105	140	55	55	55	o	54	54	54	52	52	52	$\varnothing$	—
	Cable clamp	35	105	140	2.5	2.5	2.5	6	63	61	61	49.5	59.5	59.5	$\varnothing$	—
H125, L125, H160, L160, S250-NE, S250-GE, S250-PE H250, L250	Front conn. (1)	o	105	140	o	55	55	o	o	89	89	o	87	87	$\varnothing$	—
	Cable clamp	o	105	140	o	2.5	2.5	4.5	o	96	96	o	59.5	59.5	$\varnothing$	—
E400, S400 E630, S630 PVS400	Front conn. Wide type	o	180	240	o	110	114	o	o	97	98	o	96	98	$\varnothing$	—
	Front conn. Straight type	o	140	185	o	85	85	o	o	97	97	o	94.5	94.5	$\varnothing$	—
	Cable clamp	o	140	185	o	3	3	4.5	o	97	97	o	93	93	$\varnothing$	—
H400, L400	Front conn. Wide type	o	180	240	o	110	114	o	o	134	135	o	96	98	$\varnothing$	—
	Front conn. Straight type	o	140	185	o	85	85	o	o	134	134	o	94.5	94.5	$\varnothing$	—
	Cable clamp	—	140	185	o	3	3	4.5	o	134	134	o	93	93	$\varnothing$	—
S800, S1000, PVS800	Front conn. (3)	—	215	285	—	130	130	—	—	99.5 (102)	99.5 (102)	—	99 (101.5)	99 (101.5)	—	$\varnothing$
H800, L800	Front conn. (2) (3)	—	215	285	—	130	130	—	—	99.5 (139)	99.5 (139)	—	99 (101.5)	99 (101.5)	—	$\varnothing$
S1250	Front conn. (3)	—	215	285	—	130	130	—	—	115	115	—	99 (102.5)	99 (102.5)	—	$\varnothing$

Notes:

- (1) Not suitable when extension bars (FB) are fitted.
- (2) There will be an approx. 40 mm gap between the bottom of the terminal cover and the breaker mounting surface.
- (3) Values in brackets indicate the distance to the head of terminal cover mounting screws.