



S1000-NN

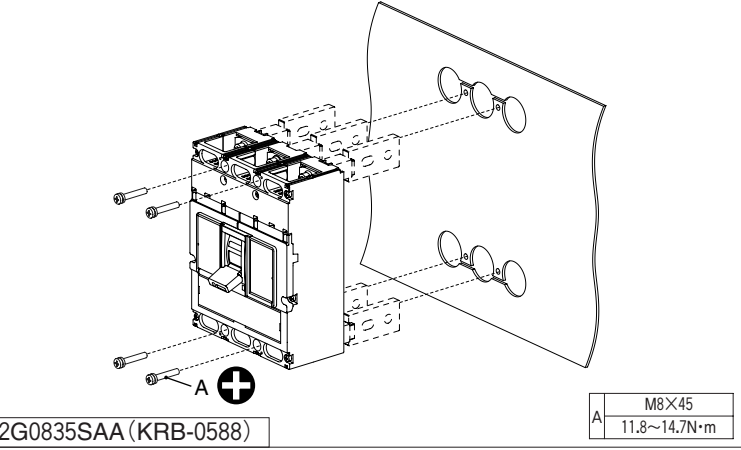
E-mail : int-sales@terasaki.co.jp

8

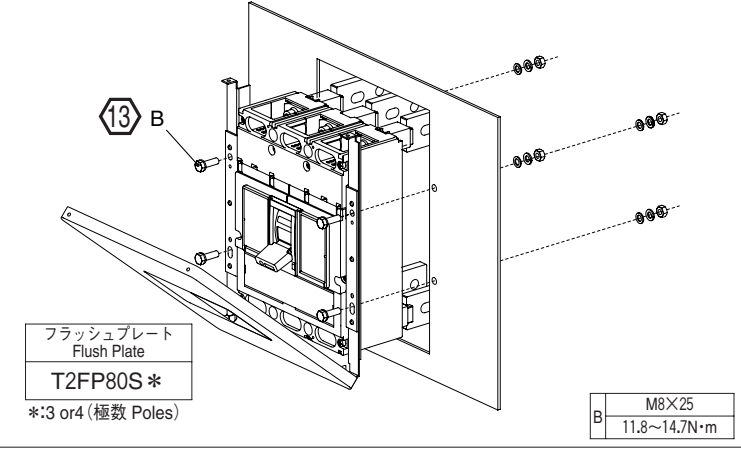
- 保守・点検は、専門知識を有する人が行って下さい。
- 保守・点検は、上位ブレーカなどを○(OFF)にし、充電していないことを確認して行って下さい。
感電のおそれがあります。
- 端子ねじは、定期的に標準締付トルクで増し締めして下さい。火災の原因となります。

- Electrical work should only be undertaken by suitably qualified persons.
- Do not place the product in an area that is subject to high temperature, high humidity, excessive dusty air, corrosive gas, strong vibration and shock, or other unusual conditions. Mounting in such areas could cause a fire or malfunction.
- Be careful to prevent foreign objects (debris, concrete powder, iron powder, etc.) and rainwater from entering product. These materials inside the product could cause a fire or malfunction.
- Prior to commencing any work on the product, open an upstream circuit breaker or isolator to ensure that no voltage is applied to the product. Otherwise, electrical shock may result.
- When connecting cable or busbar to the product, tighten terminal screws to the torque specified in this manual. Otherwise, a fire could result.
- Even when tightening the terminal screws and after conductor connection, do not apply excessive force to the terminals. Otherwise, a fire may result.
- For front-connected breakers, Insulate all bare conductors of the line side until the breaker end. If interpolate barriers are packed, be sure to use the barriers; moreover, insulate all bare conductors by insulating tape or the like so that the tape overlaps with the barriers. Insufficient insulation may result in short-circuit.

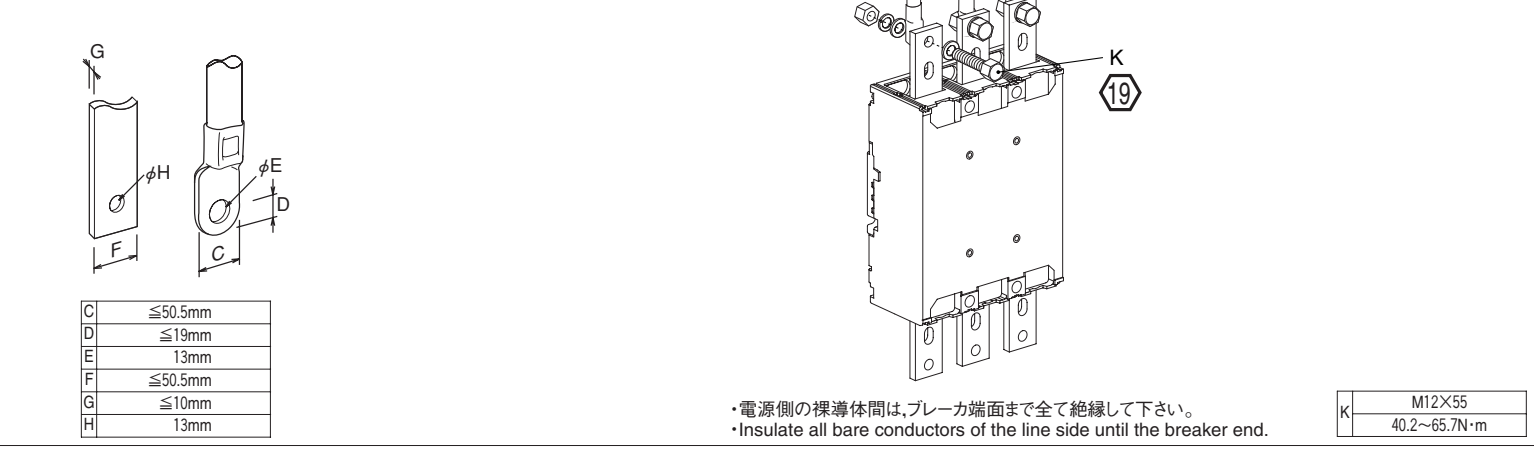
5 本体取付要領 表面形・裏面形
Breaker Mounting Procedure for FC / RC



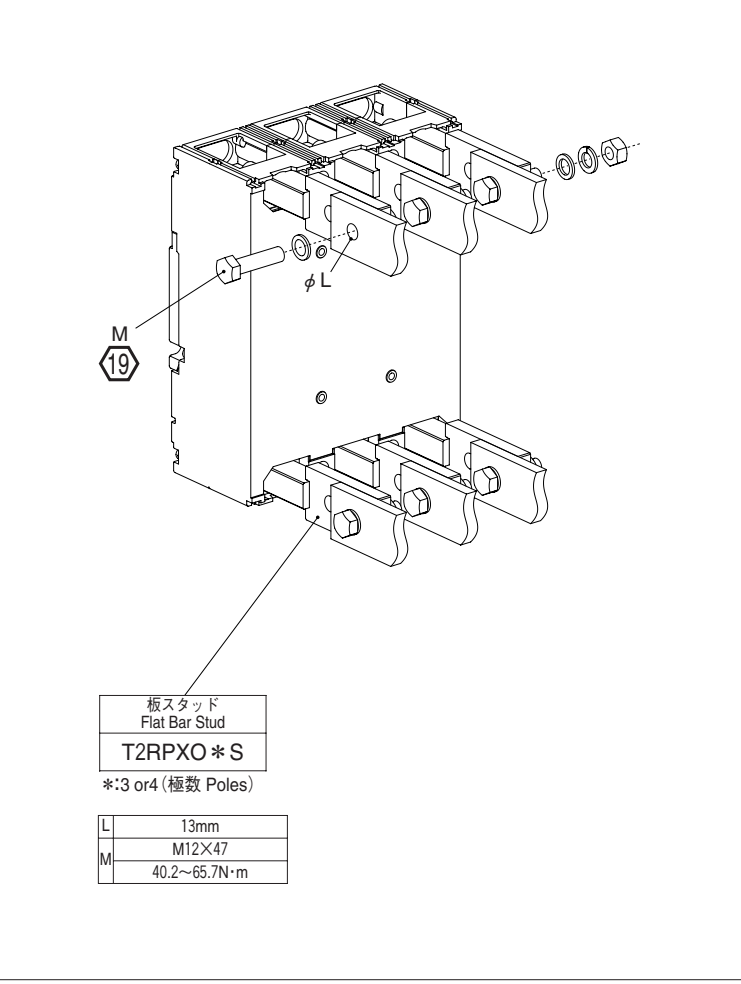
6 本体取付要領 埋込形
Breaker Mounting Procedure for F.P (Where Applicable)



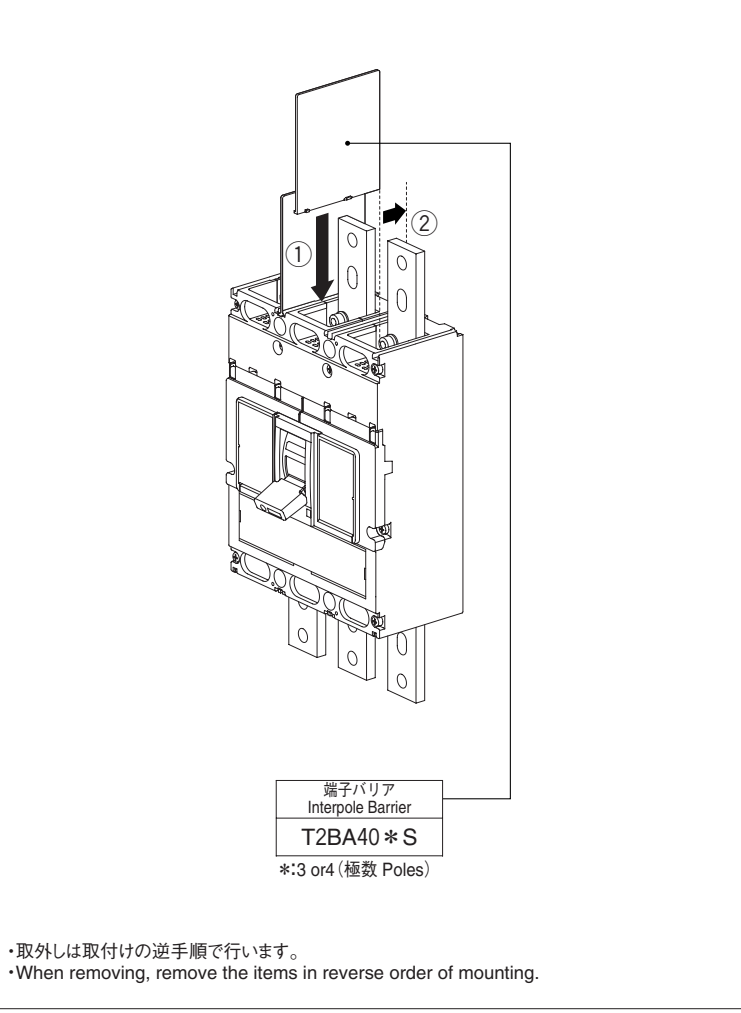
7 導体接続要領 表面形
Conductor Connection Procedure for FC



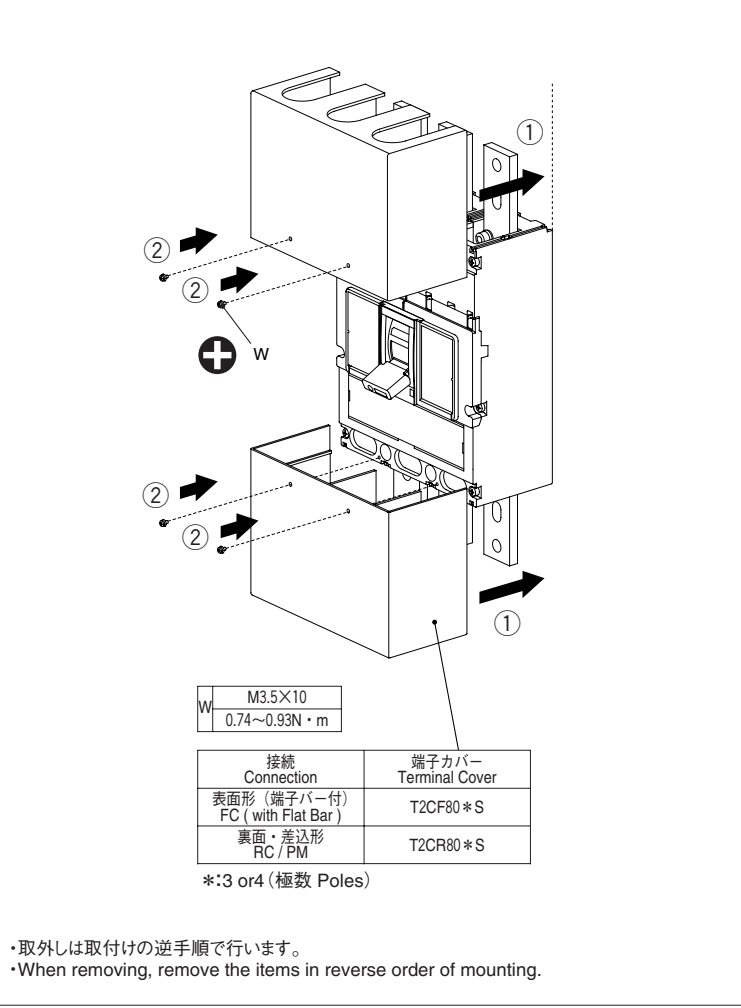
8 導体接続要領 裏面形・埋込形
Conductor Connection Procedure
for RC / F.P (Where Applicable)



9 端子バリア取付要領
Interpole Barrier Mounting Procedure



10 端子カバー取付要領
Terminal Cover Mounting Procedure



11 ハンドルホルダ／ロック取付要領
Handle Holder / Lock Mounting Procedure

